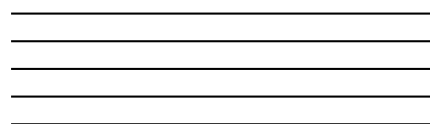
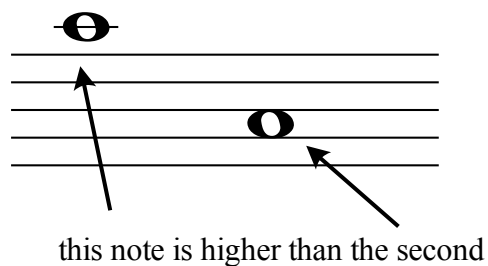
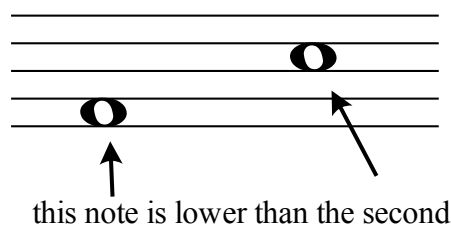


The Staff

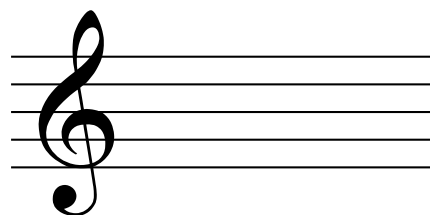
The musical **staff** is comprised of five **lines**. The **spaces** between total four.



Notes located higher on the staff have a higher **pitch**. That is, the sound is higher.



Usually a clef sign is placed at the beginning of a staff. This one is called the treble, or G clef. Note the symbol circles the second line which is where the note "G" sits on this clef.



Each note has a letter value.

